

MOTOR



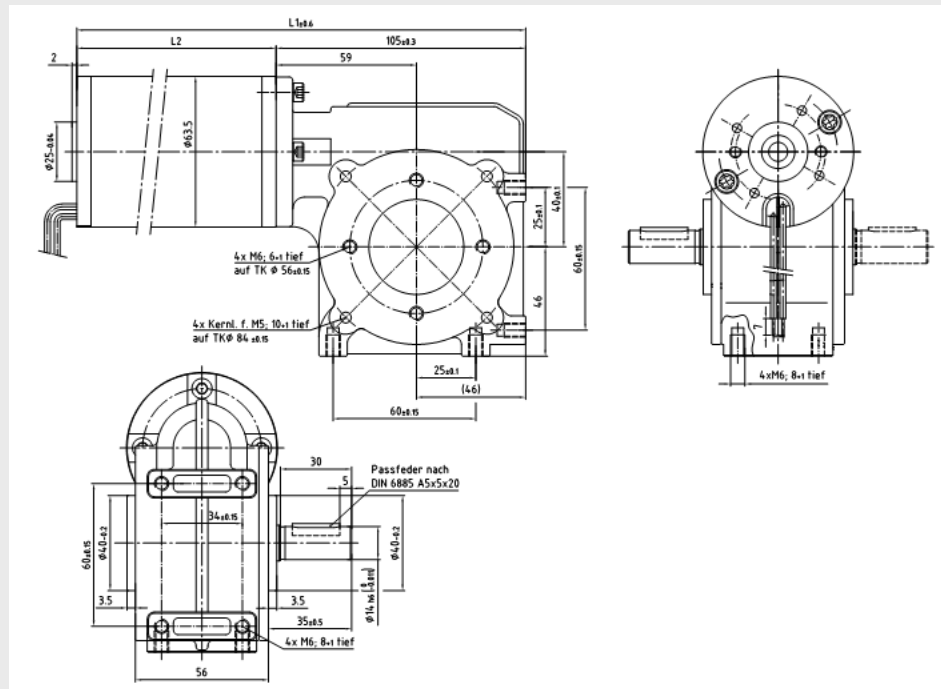
Worm Gear SN40 with motor M63

- *Bronze worm gear*
- *Low noise*
- *Withstands high axial and radial forces*

Technical data:

Max continuous torque:	15 Nm
Max torque (short duty):	20 Nm
Recommended input-speed:	< 3000 rpm
Permissible axial load:	300 N
Permissible radial load:	500 N
Efficiency:	35 - 70 %
Temperature range:	- 30...+ 80 °C

Dimensions:



Ratio i=x:1	Rpm	M63x25/I Continuous torque Ncm	M63x40/I Continuous torque Ncm	M63x60/I Continuous torque Ncm	M63x60/I12V Continuous torque Ncm
8	375	78	101	168	123
10	300	118	151	252	185
15	200	151	194	324	238
30	100	168	216	360	264
50	60	245	315	525	385

Order information:

Please contact us for more information and article number.