

# POWERSUPPLIES

## SD-1000, DC/DC converter 1000W



- 4:1 / 2:1 input voltage range (24V:19-72VDC, 96V:72-144VDC)
- Short circuit / overload / over voltage protection
- Remote ON-OFF control
- 2000VAC I/O isolation
- 3 years warranty

### Technical data:

#### Input:

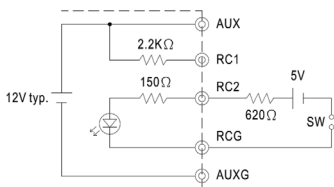
Input voltage: L:19-72VDC, H:72-144VDC  
 Input current: 23.5A/48VDC, 11.6A/96VDC  
 Inrush current: 100A/96VDC

#### Output:

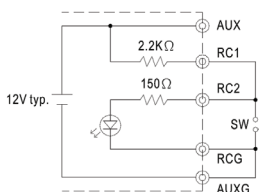
Output voltage: See table  
 Output current: See table  
 Adjustable output voltage: 12VDC: 11-15VDC, 24VDC: 23-30VDC, 48VDC: 46-60VDC  
 Protections: Short circuit/Overload/Over voltage  
 Overload protection: 5-25% over  $I_n$ , constant current limiting, re-power on to recover  
 Line regulation: +/-0.5%  
 Load regulation 0-100% load: +/-0.5%  
 Ripple: 150mVp-p  
 Efficiency: 84-92%  
 Temperature range: -20°C...+60°, see derating curve  
 Connection: Screw terminal  
 Size: 295x127x41 mm  
 Weight: 1.94kg  
 EMC: EN55022 class B, EN61000-4-2,3,4,6,8, ENV50204

### Mechanical drawing:

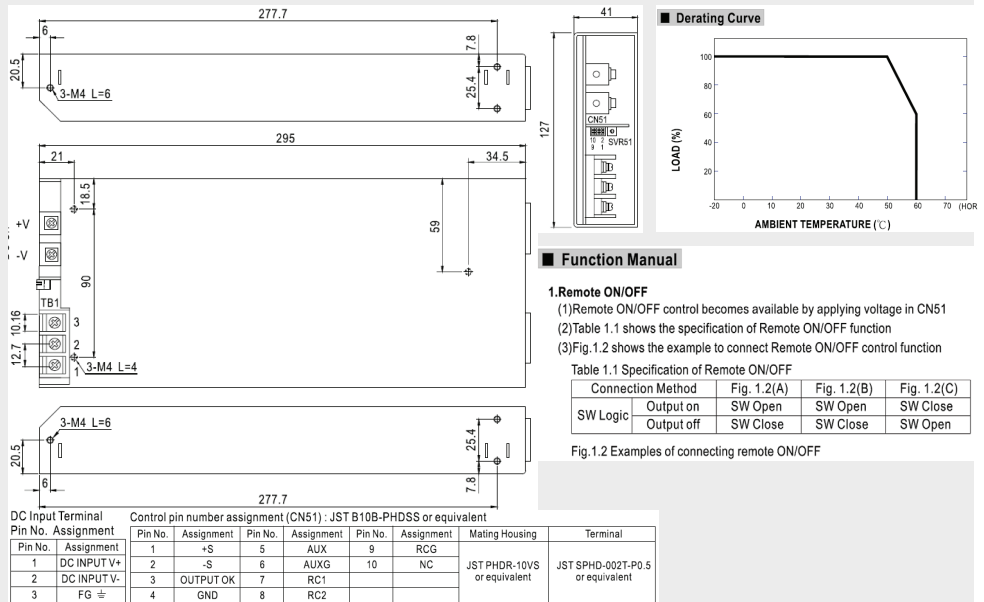
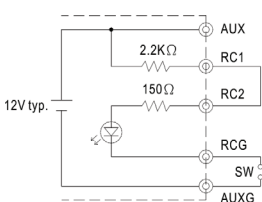
(A) Using external voltage source



(C) Using internal 12V auxiliary output



(B) Using internal 12V auxiliary output



### Ordering information:

Type	Input voltage	Output voltage	Output current
SD-1000L-12	19-72VDC	12VDC	60A
SD-1000L-24	19-72VDC	24VDC	40A
SD-1000L-48	19-72VDC	48VDC	21A
SD-1000H-12	72-144VDC	12VDC	60A
SD-1000H-24	72-144VDC	24VDC	40A
SD-1000H-48	72-144VDC	48VDC	21A