

# STRÖMFÖRSÖRJNING



## SD-1000, DC/DC omvandlare 1000W

- 4:1 / 2:1 inspänningsområde (24V:19-72VDC, 96V:72-144VDC)
- Kortslutningsskydd / överlastskydd / överspänningsskydd
- Remote ON-OFF kontroll
- 2000VAC I/O isolation
- 3 års garanti

### Tekniska data:

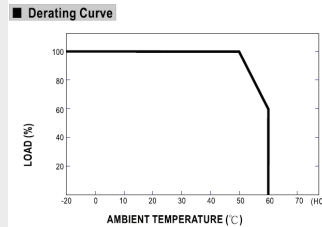
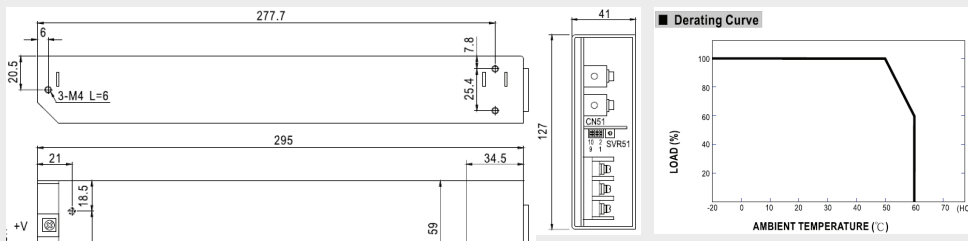
#### Ingång:

Matningsspänning: L:19-72VDC, H:72-144VDC  
 Ingångsström: 23.5A/48VDC, 11.6A/96VDC  
 Inrusnings ström: 100A/96VDC

#### Utgång:

Utgångsspänning: Se tabell  
 Utgångsström: Se tabell  
 Utspänning justerbar: 12VDC: 11-15VDC, 24VDC: 23-30VDC, 48VDC: 46-60VDC  
 Skydd: Kortslutning/överlast/överspänning  
 Strömbegränsning: 5-25% över In, constant current limiting, re-power on to recover  
 Line regulation: +/-0.5%  
 Load regulation: +/-0.5%  
 Ripple: 150mVp-p  
 Effektivitet: 84-92%  
 Temperaturområde: -20°C...+60°, se temperaturkurva  
 Anslutning: Skruvplint  
 Mått: 295x127x41 mm  
 Vikt: 1.94kg  
 EMC: EN55022 class B, EN61000-4-2,3,4,6,8, ENV50204

### Måttskiss:



### Function Manual

#### 1.Remote ON/OFF

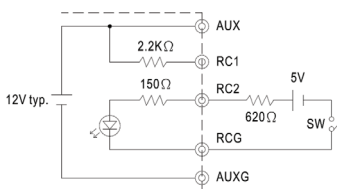
- (1) Remote ON/OFF control becomes available by applying voltage in CN51
- (2) Table 1.1 shows the specification of Remote ON/OFF function
- (3) Fig. 1.2 shows the example to connect Remote ON/OFF control function

Table 1.1 Specification of Remote ON/OFF

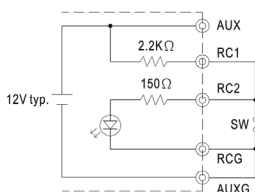
Connection Method	Fig. 1.2(A)	Fig. 1.2(B)	Fig. 1.2(C)
	SW Logic	Output on SW Open	SW Open
	Output off SW Close	SW Close	SW Open

Fig. 1.2 Examples of connecting remote ON/OFF

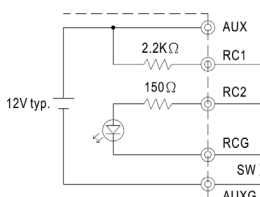
(A)Using external voltage source



(C)Using internal 12V auxiliary output



(B)Using internal 12V auxiliary output



DC Input Terminal Control pin number assignment (CN51) : JST B10B-PHDSS or equivalent

Pin No.	Assignment	Pin No.	Assignment	Pin No.	Assignment	Mating Housing	Terminal
1	DC INPUT V+	1	+S	5	AUX	9	RCG
2	DC INPUT V-	2	-S	6	AUXG	10	NC
3	FG	3	OUTPUT OK	7	RC1		
		4	GND	8	RC2		

### Beställningsinformation:

Typ	Inspänning	Utspänning	Ström
SD-1000L-12	19-72VDC	12VDC	60A
SD-1000L-24	19-72VDC	24VDC	40A
SD-1000L-48	19-72VDC	48VDC	21A
SD-1000H-12	72-144VDC	12VDC	60A
SD-1000H-24	72-144VDC	24VDC	40A
SD-1000H-48	72-144VDC	48VDC	21A