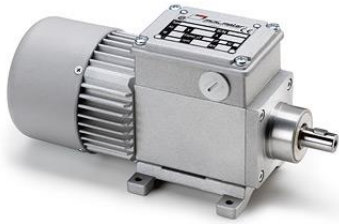


MOTOR



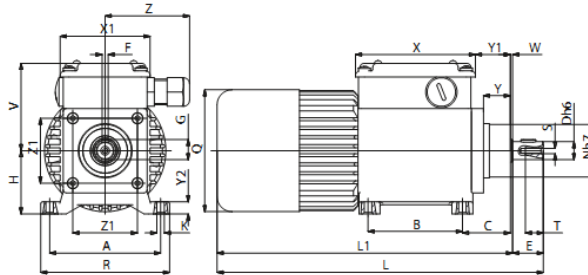
PM motor ACC, 4-37 W

- IP65 according to EN 60529 as standard
- High torque - Compact size
- Low noise
- Encoder and brake as option
- CSA approved file no. 226757

Technical data:

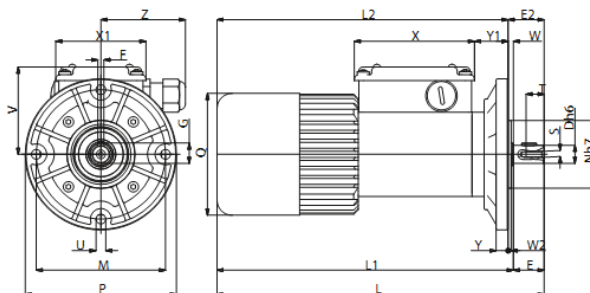
Voltage:	12 / 24 VDC
Output power:	17 - 60 W
Rated torque:	0,9 - 5 Nm
Output speed:	8 - 378 rpm
Current:	0,7 - 5 A
Approvals:	CE, cCSAus

Dimensions:



B3

Typ	A	B	C	D	E	F	G	H	K	L	L1	N	Q	R	S	T	V	W	X	X1	Y	Y1	Y2	Z	Z1	Weight kg
ACC12/24 MP	74	63	33,5	12	20,5	4	13,6	43	5,5	220	200	36	81	86	M4	10	60	2	80	60	17,5	25	8	56	43	1,805



B5

Typ	D	E	F	G	L	L1	L2	M	N	P	Q	S	T	U	V	W	W2	X	X1	Y	Y1	Z	Weight kg
ACC12/24 MP	12	20,5	4	13,6	220	200	196	86	45	100	81	M4	10	6,5	60	3,5	2	60	80	8	23	56	1,845

Order information:

The range offers more models than you can find here. Please contact us for more information.