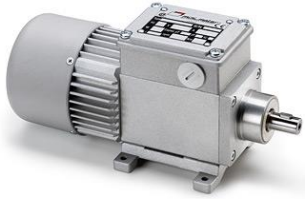


MOTOR

Asynchronous motor AC, 9-74 W

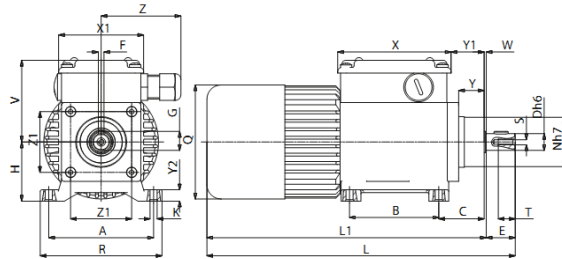


- IP65 according to EN 60529 as standard
- High torque - Compact size
- Long life time – High quality
- Encoder and brake as option
- CSA approved file no. 226757

Technical data:

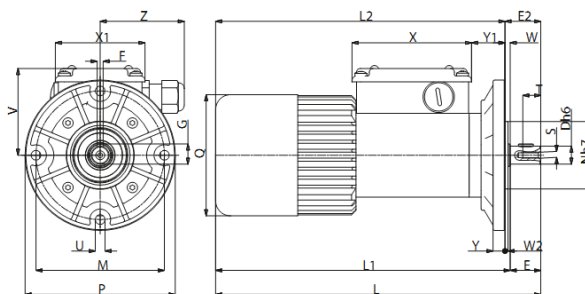
Voltage:	115 - 400 VAC/ 50-60Hz
Output power:	9 - 74 W
Rated torque:	0,4 - 5 Nm
Output speed:	3,1 -378 rpm
Current:	0,11 - 0,54 A
Approvals:	CE, cCSAus

Dimensions:



B3

Typ	A	B	C	D	E	F	G	H	K	L	L1	N	Q	R	S	T	V	X	X1	Y	Y1	Y2	W	Z	Z1	Weight kg
AC...	74	63	33,5	12	20,5	4	13,6	43	5,5	214	194	36	81	86	M4	10	60	80	60	17,5	25	8	2	56	43	1,965
AC...P	74	63	33,5	12	20,5	4	13,6	43	5,5	229	209	36	81	86	M4	10	60	80	60	17,5	25	8	2	56	43	2,230
AC...P2	74	63	33,5	12	20,5	4	13,6	43	5,5	249	229	36	81	86	M4	10	60	80	60	17,5	25	8	2	56	43	2,640



B5

Typ	D	E	E2	F	G	L	L1	L2	M	N	P	Q	S	T	U	V	X	X1	Y	Y1	W	W2	Z	Weight kg
AC...	12	20,5	24	4	13,6	214	194	190	86	45	100	81	M4	10	6,5	60	80	60	8	23	3,5	2	56	2,005
AC...P	12	20,5	24	4	13,6	229	209	205	86	45	100	81	M4	10	6,5	60	80	60	8	23	3,5	2	56	2,270
AC...P2	12	20,5	24	4	13,6	249	229	225	86	45	100	81	M4	10	6,5	60	80	60	8	23	3,5	2	56	2,680

Order information:

The range offers more models than you can find here. Please contact us for more information.